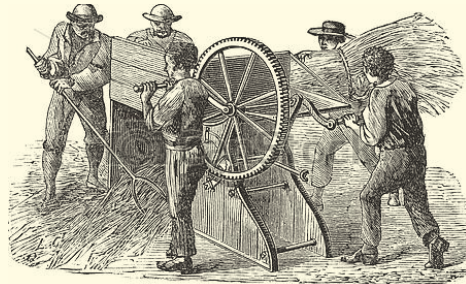


Nourish your team on the Farm



• MEETINGS AND RETREATS PACKAGES •



Nourish your team



· OUR STORY ·

All food has a story. We farm so that the story of our food is rich and savory, healthy and satisfying. It's a historic, environmental, neighborhood and family story that expresses our deep commitment to this place we call home and a healthy future for us all.

We grow and sell farm fresh food and offer authentic farm experiences, cooking classes, field to table events, and professional and family retreats for our island community, and visitors near and far who want to understand, experience and celebrate our region and the food we produce.

Our 30-acre family farm includes a farmhouse, farm kitchen, micro-creamery, gardens, greenhouses, and pastures for animals. We are not an “event center” but rather an authentic working farm that strives to increase the number of people who honor the land and the sustenance it provides.

We respect the land and its limits and grow food of the highest integrity, taste and quality. Our cutting-edge systems include crop and animal rotation, solar power, biodiesel, water recapture and composting to conserve, reclaim and regenerate resources. Our name comes from our commitment to increase our collective nourishment just as farms did back in their heydays.

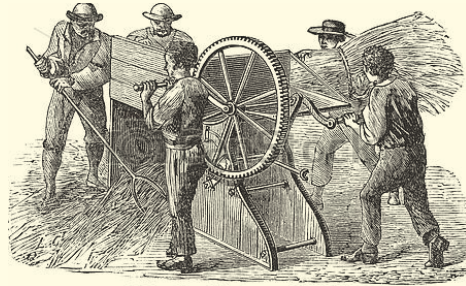
· EXPERIENCE OUR WORKING FARM ·

Our 1890s four-bedroom farmhouse inn and state of the art farm kitchen are located on a restored farmstead on the south end of Bainbridge Island—a short ferry ride from Seattle’s waterfront. Staying in one of our rooms puts you in the center of our working farm.

Whether vacationing, celebrating a special occasion or continuing your food education, we offer a unique Bainbridge Island lodging option that allows you to experience our farm, food and Island.



Nourish your team



• NOURISH YOUR TEAM AT HEYDAY FARM •

Heyday Farm understands the value of face-to-face meetings outside of the normal work environment. In addition to great meeting spaces and impeccable service of local and seasonal food grown on our working farm, we also offer opportunities for food-centered team building such as cooking classes. Our self-guided tour around the farm can offer a chance to refresh and regroup. And we provide all technology and services necessary for a productive business meeting. .

COMPLETE MEETING PACKAGE

For cost and time saving for meeting and event planners, we offer an all-inclusive pricing option. This includes a continental breakfast, all-day beverage service, afternoon snack and chef's choice lunch as well as meeting room and breakout rooms, audio visual and a farm tour for \$69/person. For meetings January – March, ask about our winter rate of \$59.00 per person. Add eggs and sausage to breakfast for an additional \$7/person. Add dinner for an additional \$29/person.

FUNCTION SPACE

We have dining space, space for cooking classes, a beautiful barn and classroom with AV. We also have an outdoor patio area with the capacity for a tent. We have four onsite rooms in our historic farmhouse with capacity for 8 overnight guests. We price the usage of the facility based on your group size and needs. Venue fee starts at \$150.

MENUS

We menu weekly based on what is seasonal and ready for harvest on the farm. Prices vary depending on the style of service, food choices and number in your group. Continental breakfast starts at \$14/person. Lunch starts at \$22/person. Dinner starts at \$29/person family style. Alcoholic beverages additional. Snacks for the day are \$7/person.

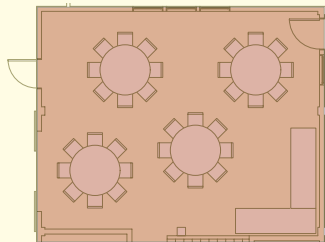
LET US HELP YOU PLAN

Visit heydayfarm.com for more details on our function spaces and to review sample menus. To begin the conversation about your meeting, email info@heydayfarm.com or call 206-201-1770.

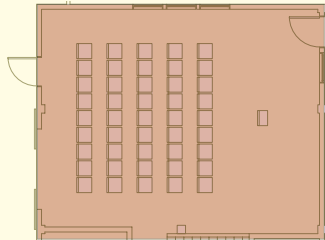


Heyday Farm Function Spaces

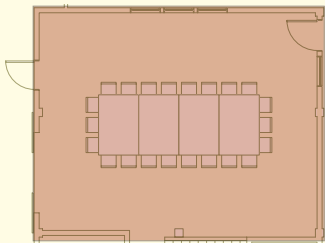
GREAT ROOM - OPTIONS



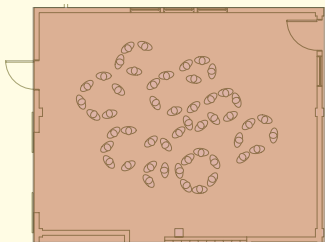
Banquet tables



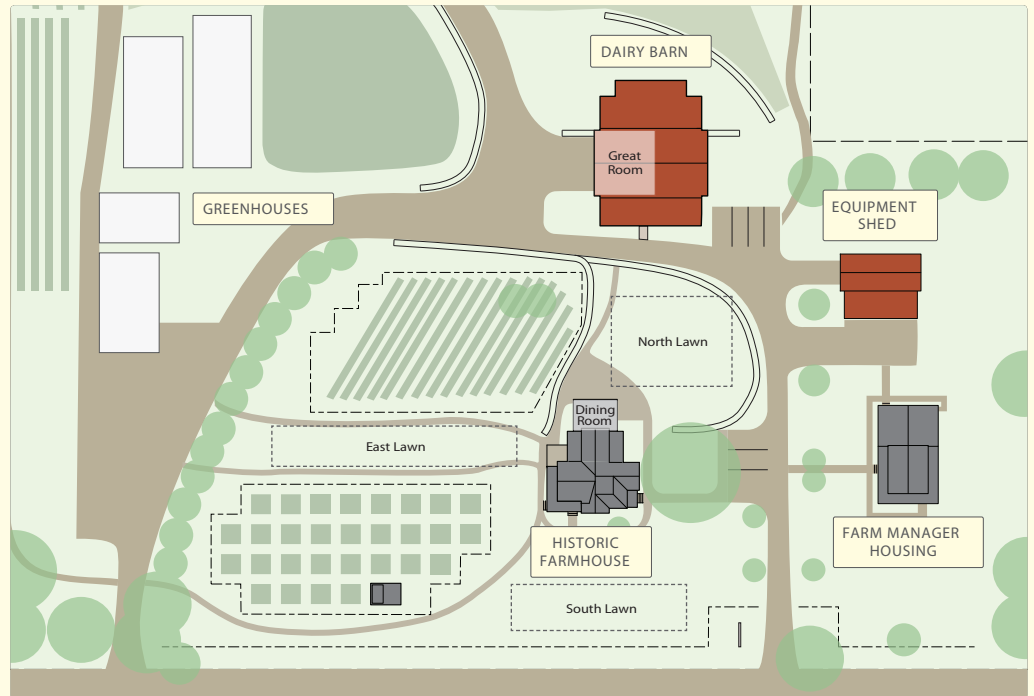
Classroom seating



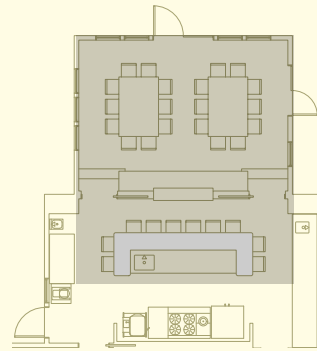
One large table



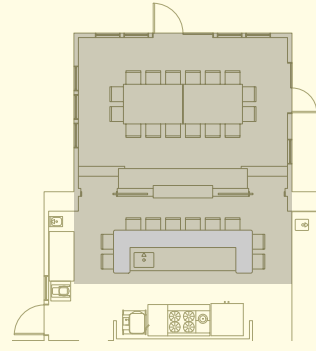
Standing



DINING ROOM - OPTIONS



Two tables - 10 people each table, plus 12 in kitchen view seating.



One large table - 20 people plus 12 in kitchen view seating.

TENT/CANOPY OPTIONS: Capacity shown is approximate

Size	Seats
20x30	60-70
20x35	70-90
20x50	100
20x100	100
30x45	100

Location	Square Footage	Dimensions	Classroom Seating	Seated Banquet	Standing Reception	One large table	Tent/Canopy Size
Great Room, Dairy Barn	600	28' x 21.5'	40-50	32-40	100	36	-
Classroom, Dairy Barn	238	17' x 14'	20-30	20-25	40	15-20	-
Dining Room, Farmhouse	315	21' x 15'	20-30	20-30	40-50	20-25	-
North Lawn, Farmhouse	1485	33' x 45'	80-100	80-100	100	40-45	30' x 45'
Garden Lawn, Farmhouse	2400	20' x 120'	80-100	80-100	100	80-100	20' x 100'
South Lawn, Farmhouse A	950	25' x 38'	60-100	60-70	100	30-40	20' x 30'
South Lawn, Farmhouse B	1296	24' x 54'	80-100	80-100	80-100	40-60	20' x 50'
Farmhouse Patio	975	25' x 39'	60-100	60-70	100	30-40	20' x 35'

